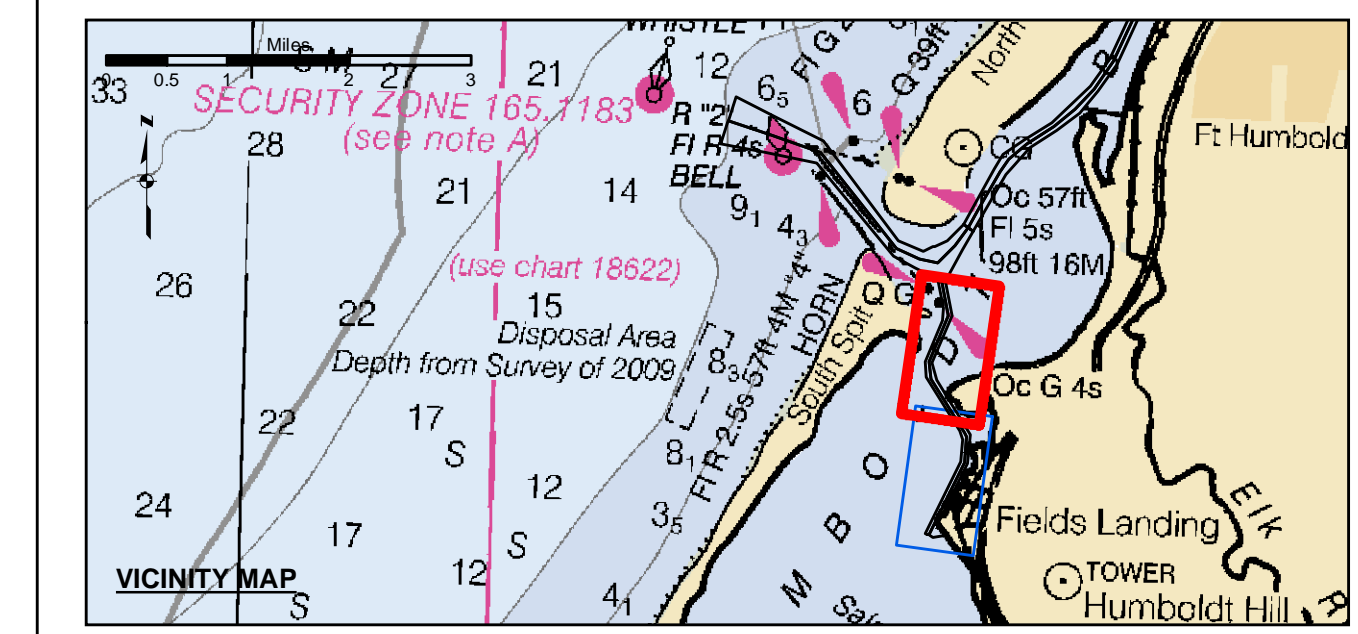


**US Army Corps of Engineers**  
 San Francisco District  
 450 Golden Gate Ave  
 San Francisco, CA 94102

**DISCLAIMER**  
 The United States Government furnishes this information as a public service. It is not intended to be used for any purpose other than that for which it was prepared. The user is responsible for the results of any application of the data for other than its intended purpose. The user is responsible for the results of any application of the data for other than its intended purpose. The user is responsible for the results of any application of the data for other than its intended purpose.

Chart Date:	Feb 17, 2021
Designed by:	PDT
Drawn by:	PDT
Checked by:	PDT
Approved:	Chief, Construction Branch
Surveyed By:	JOHN D. CUNNINGHAM
Plotted By:	PDT
Flashed By:	PDT
Checked By:	PDT
Approved:	Chief, Construction Branch

Angle Point	Easting	Northing
02D	594565.39	2164019.93
03D	594557.09	2163480.73
04D	5944815.19	2161685.73
05D	5944649.69	2161026.63
06D	5946320.29	2158673.13
07D	5946443.69	2158296.73
08D	5946373.29	2157338.43
09D	5944832.09	2154225.03
10D	5945142.49	2154071.33
11D	5945640.09	2154120.63
12D	5945716.69	2154275.33
13D	5945411.89	2154719.93
14D	5946668.09	2157257.93
15D	5946761.99	2158532.43
16D	5945301.39	2160869.83
17D	5945118.39	2161632.23
18D	5945982.89	2163668.93
D2	5945826.59	2163684.63
D3	5944966.79	2161658.93
D4	5945075.59	2160948.23
D5	5946541.09	2158602.63
D6	5946602.79	2158414.13
D7	5946520.89	2157298.13
D8	5944966.49	2154158.45



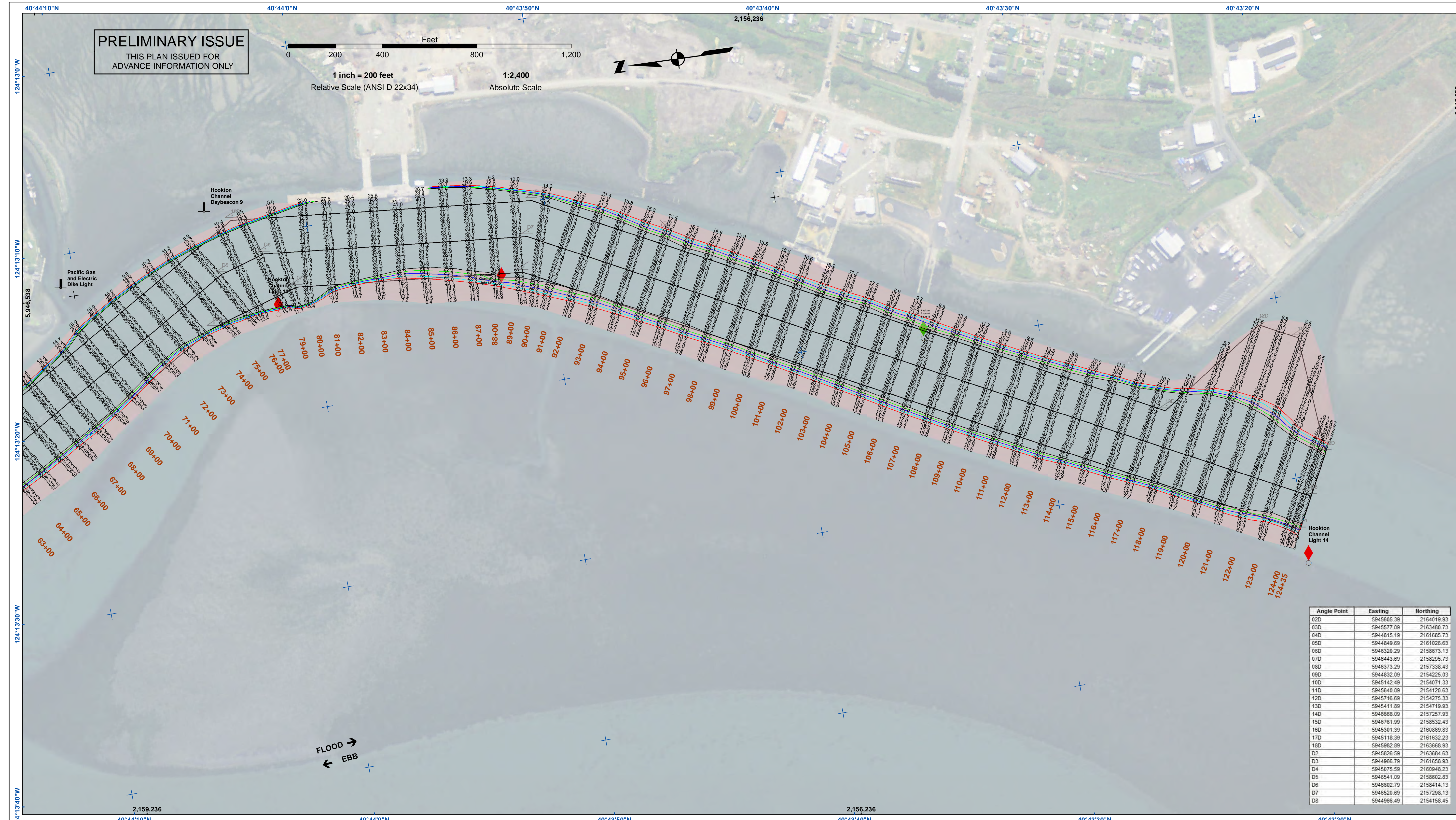
- Federal Navigation Channel
  - Shoaling Area
  - Placement Area
  - Anchorage Area
  - Wreck Area
  - Submerged Wreck
  - Angle Point
  - Beacon, General
  - Obstruction Point
  - Navigation Buoy
  - Navigation Buoy
  - Shoalest Sounding\*
- Contours**
- 26
  - 25
  - 24
  - 23
  - 22

**NOTES:**  
 DRAWINGS NOT TO BE USED AS NAVIGATION. ONLY CHANNEL CONDITION AT DATE OF SURVEY. THE LOCATION OF ALL NAVIGATION AIDS ARE BASED ON INFORMATION PROVIDED BY THE U.S. COAST GUARD. BUOY LOCATION REPRESENT THE POSITION OF THE SINKER ONLY.  
 SURVEYED BY THE CORPS OF ENGINEERS.  
 SOUNDINGS WERE TAKEN BY FATHOMETER AND ARE SHOWN TO THE NEAREST TENTHS OF A FOOT.  
 SOUNDINGS ARE BASED ON THE DATUM OF MEAN LOWER LOW WATER AT THE LOCALITY.

PROJECT DEPTHS ARE AS FOLLOWS:  
 BAR & ENTRANCE CHANNEL = 48 FEET  
 NORTH BAY, SAMOA TO MILE 5.0 & = 38 FEET  
 EUREKA CHANNEL, FIELDS LANDING CHANNEL & MILE 5.0 TO "N" STREET = 26 FEET  
 SOUNDINGS ARE BASED ON TIDE GAUGES REFERENCED TO U.S.C. & G.S.  
 BENCH MARKS AS FOLLOWS:  
 EUREKA & SOMOA CHANNELS - B.M. NO. 4 (1906) ELEV. 33.61' M.L.L.W.  
 ENTRANCE & NORTH BAY CHANNELS - B.M. NO. 9 (1937) ELEV. 16.35' M.L.L.W.  
 FIELDS LANDING CHANNEL - B.M. NO. 5 (1925) ELEV. 8.52' M.L.L.W.

CALIFORNIA  
 HUMBOLDT COUNTY  
**HUMBOLDT BAY  
 FIELDS LANDING CHANNEL  
 CONDITION SURVEY**  
 04 FEBRUARY 2021

**Sheet  
 Reference  
 Number  
 1 of 2**



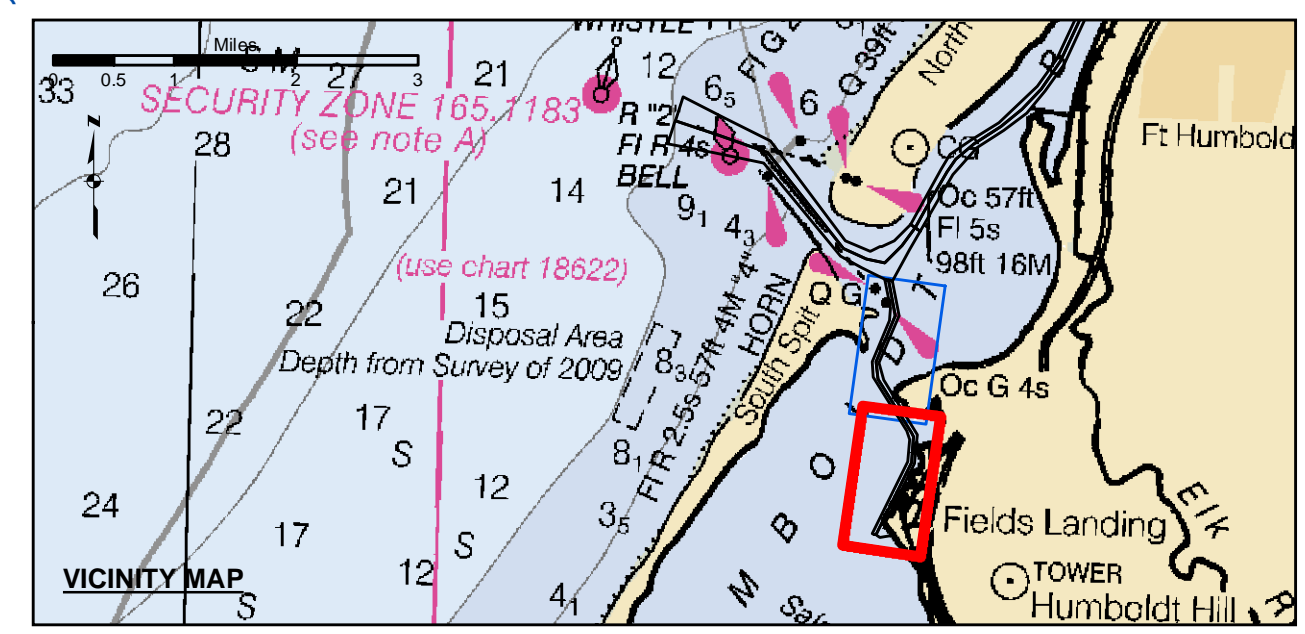
**US Army Corps of Engineers**  
 San Francisco District  
 450 Golden Gate Ave  
 San Francisco, CA 94102

**DISCLAIMER**  
 The United States Government furnishes this information as a service to the public. It is not intended to be used for any purpose other than the intended purpose. The user is responsible for the results of any application of the data for other than the intended purpose. The United States Government makes no warranty, expressed or implied, concerning the accuracy, completeness, or reliability of the information. The user is responsible for the results of any application of the data for other than the intended purpose. The user is responsible for the results of any application of the data for other than the intended purpose. The user is responsible for the results of any application of the data for other than the intended purpose.

Chart Date:	Feb 17, 2021
Designed by:	PDT
Plotted by:	PDT
Checked by:	PDT
Drawn by:	PDT

CALIFORNIA  
 HUMBOLDT COUNTY  
**HUMBOLDT BAY  
 FIELDS LANDING CHANNEL  
 CONDITION SURVEY**  
 04 FEBRUARY 2021

Angle Point	Easting	Northing
02D	5945685.39	2164019.93
03D	5945577.09	2163480.73
04D	5944815.19	2161685.73
05D	5944649.69	2161026.63
06D	5946320.29	2158873.13
07D	5946443.69	2158296.73
08D	5946373.29	2157338.43
09D	5944832.09	2154225.03
10D	5945142.49	2154071.33
11D	5945640.09	2154120.63
12D	5945716.69	2154275.33
13D	5945411.89	2154719.93
14D	5946668.09	2157257.93
15D	5946761.99	2158532.43
16D	5945301.39	2160869.83
17D	5945118.39	2161632.23
18D	5945982.89	2163668.93
D2	5945826.59	2163684.63
D3	5944966.79	2161658.93
D4	5945075.59	2160948.23
D5	5945441.09	2158902.63
D6	5946002.79	2158414.13
D7	5945200.69	2157298.13
D8	5944966.49	2154158.45



- Federal Navigation Channel
  - Shoaling Area
  - Placement Area
  - Anchorage Area
  - Wreck Area
  - Submerged Wreck
  - Angle Point
  - Beacon, General
  - Obstruction Point
  - Navigation Buoy
  - Navigation Buoy
  - Shoalest Sounding\*
- Contours**
- 26
  - 25
  - 24
  - 23
  - 22

**NOTES:**  
 DRAWINGS NOT TO BE USED AS NAVIGATION. ONLY CHANNEL CONDITION AT DATE OF SURVEY. THE LOCATION OF ALL NAVIGATION AIDS ARE BASED ON INFORMATION PROVIDED BY THE U.S. COAST GUARD. BUOY LOCATION REPRESENT THE POSITION OF THE SINKER ONLY.  
 SURVEYED BY THE CORPS OF ENGINEERS.  
 SOUNDINGS WERE TAKEN BY FATHOMETER AND ARE SHOWN TO THE NEAREST TENTHS OF A FOOT.  
 SOUNDINGS ARE BASED ON THE DATUM OF MEAN LOWER LOW WATER AT THE LOCALITY.  
 PLANE GRID AND COORDINATES ARE BASED ON THE STATE OF CALIFORNIA COORDINATE SYSTEM, LAMBERT CONFORMAL PROJECTION, ZONE 1 NAD 83, CALIFORNIA, AS DESCRIBED IN SPECIAL PUBLICATION NO. 235, PUBLISHED BY THE NATIONAL OCEAN SURVEY.

PROJECT DEPTHS ARE AS FOLLOWS:  
 BAR & ENTRANCE CHANNEL = 48 FEET  
 NORTH BAY, SAMOA TO MILE 5.0 & = 38 FEET  
 EUREKA CHANNEL, FIELDS LANDING CHANNEL & MILE 5.0 TO "N" STREET = 26 FEET  
 SOUNDINGS ARE BASED ON TIDE GAUGES REFERENCED TO U.S.C. & G.S. BENCH MARKS AS FOLLOWS:  
 EUREKA & SOMOA CHANNELS - B.M. NO. 4 (1906) ELEV. 33.61' M.L.L.W.  
 ENTRANCE & NORTH BAY CHANNELS - B.M. NO. 9 (1937) ELEV. 16.35' M.L.L.W.  
 FIELDS LANDING CHANNEL - B.M. NO. 5 (1925) ELEV. 8.52' M.L.L.W.

**Sheet Reference Number**  
 2 of 2